

MONA OFFSHORE WIND PROJECT

Environmental Statement

Volume 7, Annex 8.4: Public Transport Network

Document Number: MOCNS-J3303-RPS-10132

Document Reference: F7.8.4

APFP Regulations: 5(2)(a)

February 2024

F01



Image of an offshore wind farm

MONA OFFSHORE WIND PROJECT

Document status

Version	Purpose of document	Authored by	Reviewed by	Approved by	Review date
F01	Application	RPS	Mona Offshore Wind Ltd	Mona Offshore Wind Ltd	Feb 2024

Prepared by:

RPS

Prepared for:

Mona Offshore Wind Ltd

Contents

1 TRAFFIC AND TRANSPORT: PUBLIC TRANSPORT NETWORK 1

 1.1 Introduction 1

Figures

Figure 1.1: Public Transport Network 2

Acronyms

Acronym	Description
TfW	Transport for Wales

1 Public Transport Networks

1.1 Introduction

- 1.1.1.1 This Traffic and transport technical report sets out a summary of the public transport network for the Mona Offshore Wind Project. The public transport network comprises bus and train services, and associated bus stops and railway stations that are within potential walking distance for some construction staff from the Mona Onshore Development Area and its access points and compound locations. The location of the access points and compounds will fall within the Mona Onshore Development Area.
- 1.1.1.2 A summary of all bus routes, bus stop locations and railway station locations is set out in Figure 1.1 and has been used to define a baseline transport position as set out in Volume 3, Chapter 8: Traffic and transport of the Environmental Statement.
- 1.1.1.3 The public transport network has been derived from timetable data collected in November 2023 from the following sources:
- Transport for Wales (TfW)
 - Arriva Buses
 - M & H Coaches.
- 1.1.1.4 The extent of the public transport network has been determined based upon the location of access points and compounds along the Mona Onshore Development Area.

MONA OFFSHORE WIND PROJECT

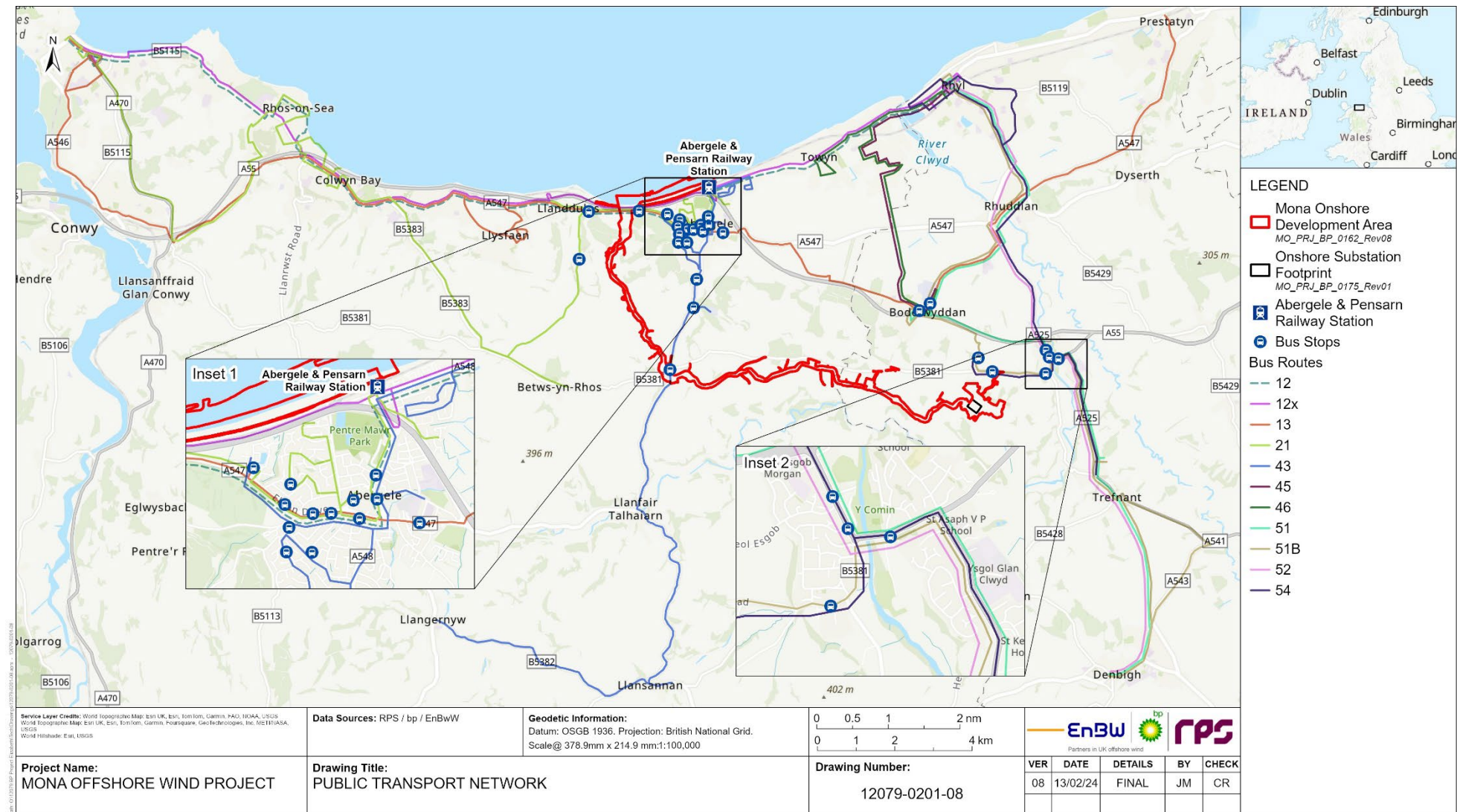


Figure 1.1: Public Transport Network